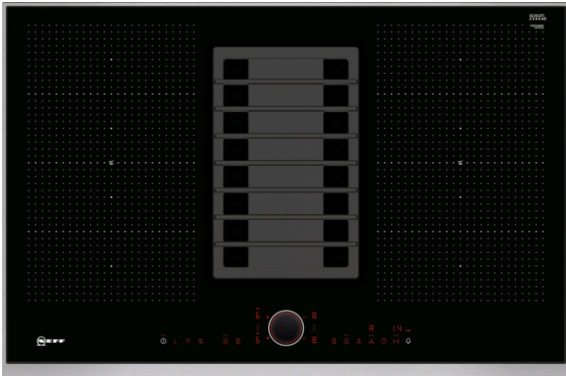
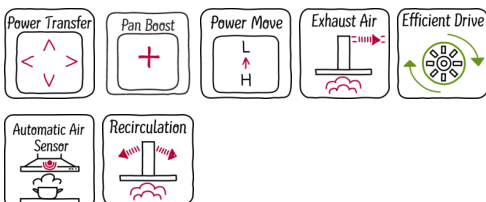


N 90
T58TS6BN0
FLEXINDUCTION COOKTOP WITH TWISTPAD® FIRE
CONTROL AND INTEGRATED DOWNDRAFT VENTILATION



A



This induction cooktop with integrated ventilation combines two appliances in one for a clear view while cooking.

- ✓ FlexInduction - The FlexZone lets you place your pots and pans anywhere you want and heats them exactly where they stand.
- ✓ PowerMove - The FlexZone is divided into three heating zones: boiling in front, simmering in the middle and warming in the rear.
- ✓ The TwistPad® Fire is a removable, magnetic, illuminated control knob that gives you precise, convenient control over all cooking zones. And to make things even easier, only the selectable functions are illuminated.
- ✓ Sensor-controlled automatic system: cooking is pure pleasure thanks to fully automatic hood control when the cooktop is switched on
- ✓ Automatic air sensor: automatically adjusts the extraction rate to match the situation in the kitchen

Features

Technical Data

Product name/family : Cooking zone ceramic
 Construction type : Built-in
 Energy input : Electric
 Required niche size for installation (HxWxD) : 197 x 780-780 x 490-490
 Width of the product (mm) : 826
 Dimensions of the product (mm) : 197 x 826 x 546
 Dimensions of the packed product (HxWxD) (mm) : 340 x 770 x 940
 Net weight (kg) : 28.470
 Gross weight (kg) : 35.0
 Residual heat indicator : without
 Location of control panel : Hob front
 Basic surface material : Ceramic
 Color of surface : Black, Stainless steel
 Color of frame : Stainless steel
 Approval certificates : Australia Standards, CE, VDE
 Length electrical supply cord (cm) : 110
 Knob Material : Plastic
 Sealed Burners : No
 heating with booster : All
 Power of 2nd heating element (kW) : 3.3
 Power of 2nd heating element (kW in boost) : 3.7
 Maximum output air extraction (m³/h) : 551
 Boost position output recirculating (m³/h) : 618
 Maximum output recirculating air (m³/h) : 557
 Boost position air extraction (m³/h) : 684
 Noise level (dB) : 70
 Odour filter : No
 Operating Mode : Convertible
 Delay Shut off modes : 6
 Grease filter type : Kassette
 Electrical connection rating (W) : 7400
 Voltage (V) : 220-240
 Frequency (Hz) : 60; 50
 Main colour of product : Black
 Approval certificates : Australia Standards, CE, VDE
 Length electrical supply cord (cm) : 110
 Required niche size for installation (HxWxD) : 197 x 780-780 x 490-490
 Dimensions of the product (mm) : 197 x 826 x 546
 Dimensions of the packed product (HxWxD) (mm) : 340 x 770 x 940
 Net weight (kg) : 28.470
 Gross weight (kg) : 35.0

Optional accessories

Z8100X1	Exhaust kit
Z8200X1	Recirculating kit
Z9410X1	Stainless Steel roaster with glas lid
Z9415X1	Steaming Rack for Stainless Steel roaste
Z9416X2	Griddle Plate
Z9417X2	Teppan Yaki (large)
Z9442X0	Set of 3 pots and 1 pan
Z9453X0	System pan diameter 21cm



N 90

T58TS6BNO

FLEXINDUCTION COOKTOP WITH TWISTPAD®
FIRE CONTROL AND INTEGRATED DOWNDRAFT
VENTILATION

Features

Handling

- TwistPad® Fire

Flexibility

- 2x Flex zones
- 4 induction zones
- Cooking zones:
 - 1 x Ø 400 mmx240 mm, 3.3 KW (max. Power level 3.7 KW)
Induction or 2 x Ø 200 mm, 2.2 KW (max. Power level 3.7 KW)
Induction;
 - 1 x Ø 400 mmx240 mm, 3.3 KW (max. Power level 3.7 KW)
Induction or 2 x Ø 200 mm, 2.2 KW (max. Power level 3.7 KW)
Induction

Comfort & Convenience

- PotBoost function for all cooking zones
- PanBoost
- PowerMove
- 17 power levels for each cooking zone
- Residual heat indicator: Digital 2-step
- Automatic pan recognition sensor
 - Power management function
 - Automatic safety switch-off
 - Child safety lock
 - Wipe protection function
- ReStart function
- QuickStart - Quick and automatic first pot detection
- Keep warm function for all cooking zones

Design

- Black ceramic glass with stainless steel flush-fitted trim

Ventilation

- Extraction rate according to EN 61591:
 - min. Normal use 169 m³/h
 - max. Normal use 551 m³/h
 - Intensive setting 684 m³/h
- Performance in re-circulated extraction:
 - min. normal setting 139 m³/h
 - max. normal setting 557 m³/h
 - Boost-/Intensive setting 618 m³/h
- Noise min./max. Normal Level: 39/69 dB
- Suitable for ducted or re-circulated extraction (Accessory is respectively required)
- For ducted extraction extraction kit (accessory Z8100X1) required
- For recirculated extraction cleanAir recirculating kit (accessory Z8200X1) needed
- Fully-automatic extraction functionality with air quality sensor
- Fully-automatic fan speed level control or optionally manual control by TwistPad® Fire user interface
- 9 fan speed levels plus 1 intensive setting
- Automatic 30 minutes run-on function
- Average Energy Consumption: 53.5 kWh/year
- Cast-iron air inlet grid, heat resistant, dishwasher safe
- Removable and detachable grease filter and liquid collector unit, dishwasher safe
 - integrated stainless steel grease filters, dishwasher safe
 - condensate and liquid collector unit; ca. 200ml capacity; dishwasher safe
- Liquid spillover safety tank, ca. 2.000ml capacity, Twist-off lock, dishwasher safe
- Saturation indicator for grease filter
- Saturation indicator for cleanAir odor filter
- Appliance measurements (H/W/D): 197 mm x 826 mm x 546 mm
- Length wire connection: 110 cm
- 7.4 kW total connected load
- Voltage: 220 - 240 V
- Cable included
- Noise level in ducted extraction :
 - min. normal setting 42 dB(A) re 1 pW (31 dB(A) re 20 µPa sound pressure)
 - max. normal setting 70 dB(A) re 1 pW (59 dB(A) re 20 µPa sound pressure)
 - Boost-/Intensive setting 75 dB(A) re 1 pW (64 dB(A) re 20 µPa sound pressure)
- Noise level in re-circulated extraction:
 - min. normal use: 42 dB(A) re 1 pW (31 dB(A) re 20 µPa sound pressure)
 - max. normal use: 73 dB(A) re 1 pW (62 dB(A) re 20 µPa sound pressure)
 - Intensive: 75 dB(A) re 1 pW (62 dB(A) re 20 µPa sound pressure)

N 90

T58TS6BN0

FLEXINDUCTION COOKTOP WITH TWISTPAD®
FIRE CONTROL AND INTEGRATED DOWNDRAFT
VENTILATION

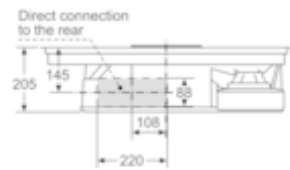
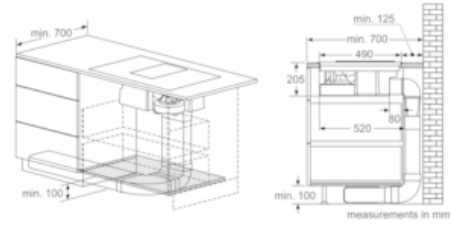
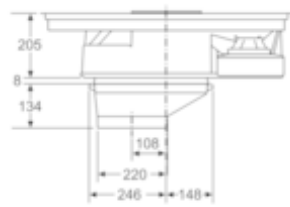
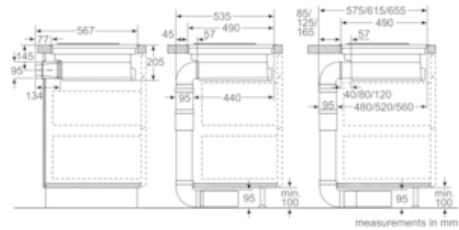
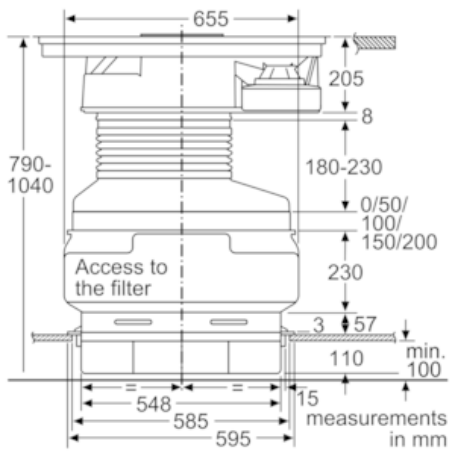
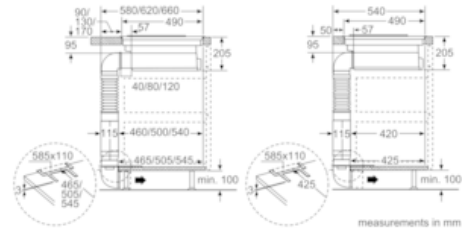
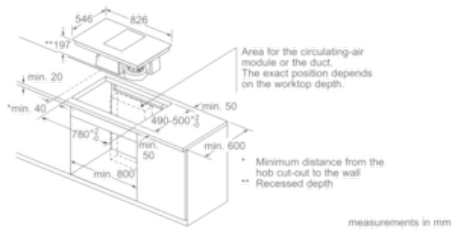
Features

Optional accessories

- For ducted extraction extraction kit (accessory Z8100X1) required
- For recirculated extraction cleanAir recirculating kit (accessory Z8200X1) needed

N 90
 T58TS6BN0
 FLEXINDUCTION COOKTOP WITH TWISTPAD®
 FIRE CONTROL AND INTEGRATED DOWNDRAFT
 VENTILATION

Dimensioned drawings



N 90
T58TS6BN0
FLEXINDUCTION COOKTOP WITH TWISTPAD®
FIRE CONTROL AND INTEGRATED DOWNDRAFT
VENTILATION

Dimensioned drawings

